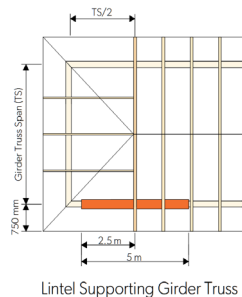
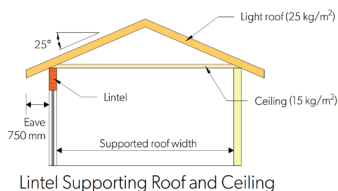


Comparison Table

- Lintel span: 5m
- Mid span deflection: 12mm
- Roof Pitch: 25°
- No Snow
- High Wind Zone (Pressure coefficients: 0.9 up, 0.4 down)
- Lintels restrained along their top edge at 900mm centres



Beam	Supported roof width (m)	Supported girder truss span (m)	Approximate weight (kg)
PLX20-240x90	6.85	6.10	74.9
PLX20-290x90	14.0	10.2	91.5
FB25L	4.25	NA	106.6
FB25M/250PF8	7.55	6.60	125.1
FB30M/300PF8	15.3	10.9	151.5
200PF10	3.85	NA	108.7
250PF10	9.4	7.75	137.8
300PF10	18.8	12.5	168.9
hyONE-240x90	5.00	NA	64.8
hyONE-300x90	11.3	8.80	81.0
GL17-230x85	4.3	NA	63.5
GL17-260x85	6.9	6.10	72.0
GL17-295x85	10.7	8.50	81.5
GL15-230x85	3.65	NA	63.5
GL15-260x85	5.90	5.45	72.0
GL15-295x85	9.35	7.70	81.5

The table is for comparison only, and any Prolam product should be verified against the complete selection chart or the Prolam online specifier.

Alternative to Fitch Beam

Prolam® sizes are based on equivalent deflection. These tables are for guidance only, and any Prolam substitution should be verified against the complete selection chart or the Prolam online specifier. specifier.prolamnz.com. Alternatives may not be suitable for all situations.

Fitch Beam	Prolam PL8 Alternative	Prolam PL12 Alternative	Prolam PLX20 Alternative
FB15L	190 x 63	140 x 90 or 190 x 42	-
FB20M	290 x 90	240 x 90	240 x 90
FB25L	290 x 90	290 x 63	240 x 90
FB25M	360 x 90 or 315 x 112	315 x 90 or 290 x 112	290 x 90
FB30M	405 x 90	360 x 90	290 x 90*
*PLX20-290x90 is the closest equivalent to FB30M.			

This schedule applies only to Prolam products